

AE4000 Series OTDR Module

Key Benefits

- The flexible FC-1 modular platform enables AE4000 OTDR module to be combined with other test modules to expand test application without investing in additional platforms.
- The user is able to detect the end of a jumper cable with its minimum dead zone of < 0.8m
- Easy to use graphical interface shortens learning curve
- One button auto test simplifies setup to quickly detect faults
- User friendly touch screen operation
- Fast storage function and one-button operation for saving results.
- Unique mini menu allows quick and convenient operation of result review



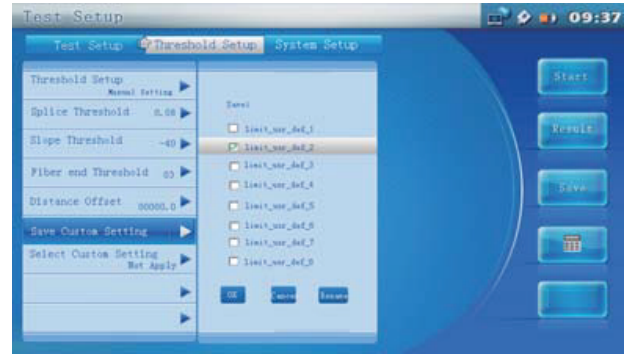
The AE4000 series of OTDR modules are the latest modules to be added to the FC-1 family. The FC-1 platform is Deviser's newest modular platform with advanced technologies that host a wide-range of test and measurement modules. In addition to the OTDR module, the FC-1 supports Ethernet and Transport modules, making FC-1 the only instrument required for testing from physical layer to service layer of emerging (or next generation) networks.

The OTDR modules cover a variety of dynamic ranges, satisfying a wide range of testing needs from PON to long haul networks. Its 8 hours of battery operation, allows the user to test all day without stopping to charge its batteries. The FC-1 is the ideal solution of field operation due to its durable, flexible and expandable design.

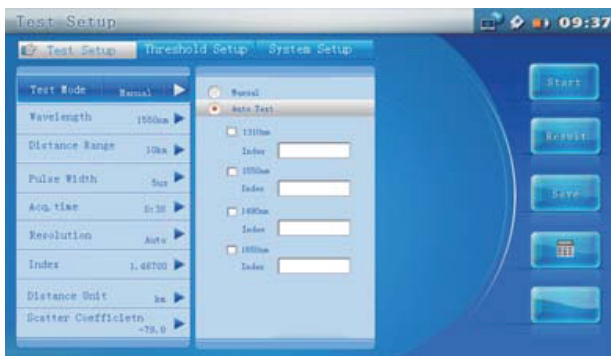
Model	Wavelength	Dynamic Range(dB)	Event Dead Zone (m)	Attenuation DZ (m)
AE4000A	1310/1550	37/35	0.8	5
AE4000B	1310/1550	40/38	0.8	4.5



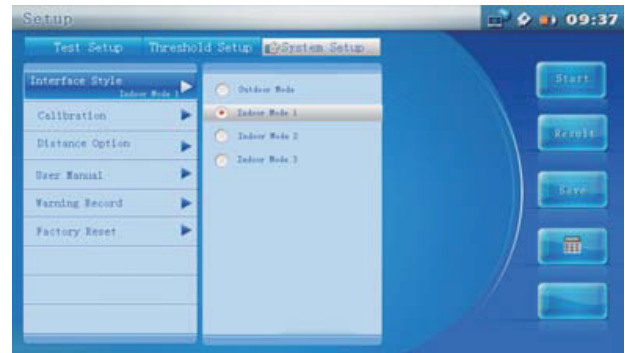
1. Unique mini menu operation not only simplifies the operation but also increases the efficiency of test.
2. Simple setup with intuitive test result display
3. Easily accessible help function



Supports test profiles which allows users to save different measurement parameters



Intelligent auto-mode setups up measurement parameters, completes measurement and stores data.



Multiple interface styles enables users to select the best view for different tests.

- Live fiber detection protects the optical adapter
- Optical connector detection notifies users of missing connectors
- Self-calibration of OTDR

Specification	
Measurement Time	Customized
Distance Accuracy	±(0.75m +0.0005 % Distance +Sampling Resolution)
Attenuation Accuracy	±0.002dB
Loss Threshold	0.01dB
Loss Resolution	0.001dB
Distance Resolution	0.05m-12.8m
Linearity	0.03dB/dB
Sampling Points	256000
Data Storage	>10000
Optical Adapter	FC/PC, SC/PC
Battery	Lithium Rechargeable Battery, Input < 4hours, Output > 10hours
Operating Temperature	-10°C ~ 50°C
Storage Temperature	-40°C ~ 70°C
Relative Humidity	0%-95%
Weight (Module)	2.3kg (0.35kg)
Accessories	
SC/PCAdapter	1
Package Bag	1
Test Report	1
Quick Operation Manual	1
Disc	Workbench PC Management Software and Operation Manual

©2014 Deviser Instruments Incorporated. 780 Montague Expressway, Suite 606, San Jose, CA 95131. All rights reserved. Specifications subject to change without notice. All product and company names are trademarks of their respective corporations. Deviser Instruments manufacturing facilities are ISO 9001 certified. Do not reproduce, redistribute, or repost without written permission from Deviser Instruments. AE4000 OTDR Module 140920