

**DEVISER®**

Ensuring Tomorrow's Communication Networks

---

# Optical and Fiber Communication T&M Solutions



## • Optical Network Testing

**TC801 100G Portable Network Transmission Analyzer**

- OTN network testing, including complete ODU multiplex mapping of OTU1-OTU4
- SDH network testing, including complete multiplex mapping of STM1-STM64
- IP Carrier Network test
- Verifying optical devices and fiber link, including BER and optical power testing of transceiver

**AE3100 Series OTDR**

- Backbone Network/Metro links/Access network fiber cable testing

**AE8560 Portable Optical Spectrum Analyzer**

- DWDM channel analysis
- OSNR measurement
- Wavelength and temperature drift testing

**TC603 Handheld 1G Ethernet Tester**

- Ethernet performance evaluation
- Installation, activation and maintenance of Metro Ethernet/Mobile backhaul
- Deployment of point-to-point Ethernet access services
- Online fault diagnosis of Realtime bitstream

**TC722 Handheld Dual E/O ports 10G Transport Tester**

- Ethernet and internet service activation
- Ethernet performance evaluation for complete end-to-end testing
- PTN/IPRAN network performance test
- Metro ethernet construction, deployment and maintenance
- Optical communication teaching and research

**EP730 OLTS**

- Insertion loss, ORL and fiber cable length testing

**EP350 PON Power Meter**

- GPON, EPON, XG(S)-PON, NG-PON2 service activation and maintenance

**AE130 Optical Power Meter**

- Fiber optics network construction and maintenance

## • Optical Sensing Test

Optical/Fiber optical filter

Optical/Fiber optical amplifier

Optical/Fiber optical interferometer

Optical/Fiber optical sensor

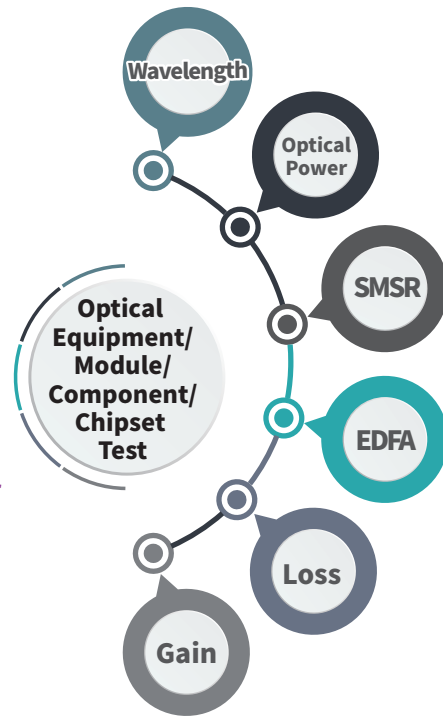
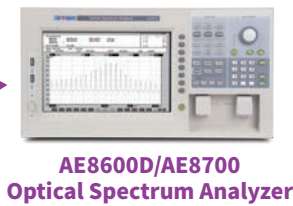
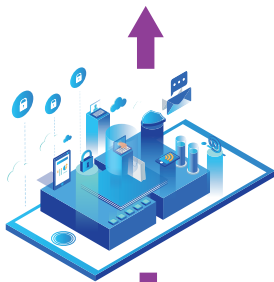
Optical grating test

**Device Under Test (DUT)**

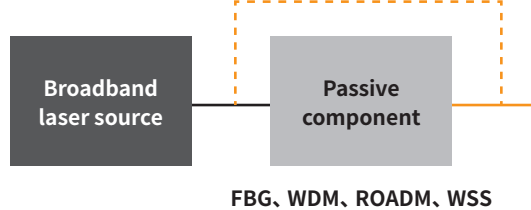
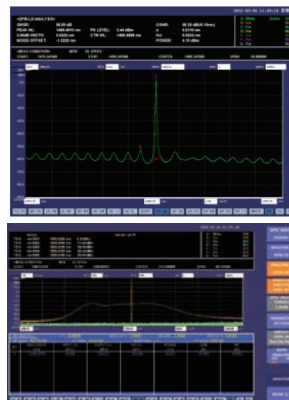
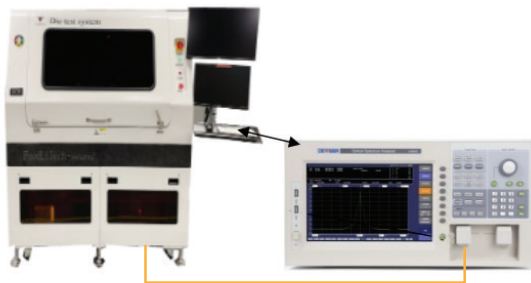
**AE8600D/AE8700 Optical Spectrum Analyzer**

**TLS1036/TLS1056 Tunable Laser Source**

## • Laser and Photonics Test



## • Materials and Equipment manufacturing



### Optical chipset test

Measure and display all key spectral performance indexes, such as the centre wavelength, power, SMSR of the DUT, these are all the important evaluation indexes for optical chipset production and application

### Optical amplifier test(EDFA)

EDFA analysis function automatically detects and calculates the values of GAIN and NF in every channel of the DUT.

### Passive component testing

In conjunction with a broadband light source such as ASE, SLD, or SC light source, the OSA can simply performance evaluation of passive devices such as WDM filters. The built-in optical filter analysis function simultaneously reports peak/valley wavelength, level, crosstalk, and ripple width.

### Optical transceiver test

In conjunction with bit error rate test (BERT) equipment, the OSA can measure the centre wavelength and spectral width of transceivers and LD modules.



## AE8700 High Resolution Optical Spectrum Analyzer



- Single mode and multi-mode wavelength range from 600 nm to 1700 nm
- The highest resolution up to 10pm, the highest sensitivity down to -85dBm
- Wide range of power measurement from +20 dBm to -90 dBm and wide dynamic range up to 80 dB typical
- Outstanding wavelength & power measurement accuracy with  $\lambda$  resolution up to 0.01nm and built-in calibration source (Optional)
- WDM, Laser, and EDFA test modes for popular applications from field to factory
- 10.1" 1280x800 TFT touchscreen LCD
- Multiple data storage and interface capabilities – LAN (RJ-45), USB, RS232, GP-IB (Option)
- Weight: 19 kg , Dimensions ( H × W × D ): 221 × 427 × 448 (mm)

## AE8600D High Performance Optical Spectrum Analyzer



- Single mode and multi-mode wavelength range from 600 nm to 1700 nm
- 7 wavelength resolution settings: 20pm to 2nm, enable users to choose the best value according to the characteristics of the DUT
- The highest sensitivity down to -90dbm
- Wide range of power measurement from +20 dBm to -90 dBm and wide dynamic range up to 73 dB typical
- Outstanding wavelength & power measurement accuracy with  $\lambda$  resolution up to 0.02nm and built-in calibration source (Option)
- High straylight suppression rate, the AE8600D monochromator is specifically designed to offer excellent stray-light suppression capability
- WDM, Laser, and EDFA test modes for popular application from field to factory
- 10.1" 1280x800 TFT touchscreen LCD
- Multiple data storage and interface capabilities – LAN (RJ-45), USB, RS232, GP-IB (Option)
- Weight: 17 kg , Dimensions ( H × W × D ): 221×427×448 (mm)



### ► DFB LD Analysis

- Center wavelength
- Side Mode Suppression Ratio (SMSR)
- Optical Signal-to-Noise Ratio (OSNR)



### ► WDM Channel Analysis

- Channel wavelength and power
- OSNR: In-band vs out-of-band signal-to-noise ratio

## AE8560 Portable Optical Spectrum Analyzer



- Single mode and multi-mode wavelength range from 600 nm to 1700 nm
- Wavelength resolution 40pm
- Wide range of power measurement from +15 dBm to -85 dBm and wide dynamic range up to 60 dB typical
- WDM, EDFA, Drift, Spectral transmittance, Laser analysis test modes
- Industry's smallest OSA, built in rechargeable battery for 3 hours operation
- Built-in calibration light source compensates for on-site environmental changes, vibration
- 10.1 inch high-resolution LCD, weight less than 3kg, convenient for on-site application
- Weight: 3.5 kg, Dimensions ( H × W × D ): 211×292×94 (mm)

## TLS1056 High-performance Tunable Laser



- Continuously adjustable wavelength in all bands
- Wide tuning range lineup: 1480 to 1640 nm
- Bidirectional scanning speed > 100nm/s
- 12 dBm optical power output across the range
- Ultra-low spontaneous emission and narrow line width
- Built in real-time wavelength meter to ensure wavelength accuracy
- Weight: 18 kg, Dimensions ( H × W × D ): 133×442×413 (mm)

## EP350 PON Power Meter



- Multiple PON technologies supported on a single unit: GPON, EPON, XG(S)-PON, NG-PON2, and RFoG, etc
- Pass-through mode for ONT/ONU verification
- USB and Bluetooth connectivity
- Access test results from your smartphone
- Pass/fail limits and data storage for easy analysis
- Compact, rugged designed for easy mobility through the network
- Visual fault locator option
- Weight: 0.4 kg, Dimensions ( H × W × D ): 184×83×44 (mm)



## AE3100 Series Handheld SM/MM/PON Optimized OTDR

- High performance OTDR for FTTx and RFoG network
- Optimized for verifying PON splitters
- Multi wavelengths and models to meet your individual needs
- Broad dynamic range coverage (SM 28 – 46dB, MM 25/27dB)
- “Fiber Path” intelligent analysis feature for less experienced OTDR users
- Built in Optical Power Meter, Optical Light Source and VFL modules
- Innovative “Seeker” and “Worker” function simplifies testing and reduces troubleshooting time in field
- Weight: 1.5 kg, Dimensions ( H × W × D): 171×206×75 (mm)



## OM6200 High Performance Optical Power Meter

- High performance optical power meter for Lab, R&D and production line
- 5 inch, 800 x 480 hi-resolution touch screen for easy use
- Wide power range -80 to 6dBm(OM6200-10), -60 to +26dBm(OM6200-30)
- Excellent accuracy 0.001dB, and resolution 0.00001dB
- Wide wavelength range from 850nm to 1625nm
- Weight: 1 kg, Dimensions ( H × W × D): 179×145×56 (mm)



## TC722 All-in-One 10G Transport Tester

- 7 inch LCD touchscreen, professional, efficient UI experience
- Two 10Gbps SFP+ ports, two 10/100/1000Mbps RJ45 ports
- EtherBERT, RFC2544, Y.1564 and IEEE802.3ah QAM standard
- Complies with BERT test of SDH and OTN, balanced and unbalanced E1 test for AMI/HDB3 encoding
- Generation and detection of 10 information streams, with flow analysis and statistics function
- Device detection, Loopbacks, Ethernet pass through and Sync-Ethernet Test functions
- Supports 3 VLAN tags (QinQ), 3 MPLS encapsulation labels, IPv6 protocol, runt and jumbo frame configuration
- Cable diagnostics, optical power measurement, PING, TraceRoute tools, SCPI remote control
- Weight: 1.5 kg, Dimensions ( H × W × D): 171×206×75 (mm)

## TC601G/TC602/TC603 Series Handheld Gigabit Ethernet Tester



- Complete solution for activating, verifying & fault-diagnosing Ethernet service from 10 Mbit/s to 1 Gbit/s quickly and easily
- Easy-to-use GUI with 5 inch touchscreen
- Single/Dual 1 Gbps electrical and optical interface
- EtherBERT, RFC2544, Y.1564 and IEEE802.3ah QAM standard
- Ethernet, E1 and IPRAN Test
- Intelligent loopback, traffic analysis & statistics and alarm detection functions
- Portable and light weight
- Supports 3 VLAN tags (QinQ), 3 MPLS encapsulation labels, IPv6 protocol, runt and jumbo frame configuration
- Cable diagnostics, optical power measurement, PING, TraceRoute tools, SCPI remote control
- SCPI remote control
- Weight: 0.8 kg, Dimensions ( H × W × D ): 179×145×56 (mm)

## TC801 100G Portable Network Transmission Analyzer



- Simplifies multi-technology testing with an all-in one dual 100G handheld unit, compact and portable
- Easy-to-use GUI with 10.1-inch touchscreen for better operability
- Test interfaces support 10/100/1000 Base-T SFP/SFP+ and QSFP+/QSFP28/CFP4 HD-BNC
- Supports comprehensive rate testing ranging from PDH (2M) through to 112G OTU4
- Complete support of protocols including Ethernet, OTN, SDH, PDH, CPRI, eCPRI
- RFC2544 and Y.1564 ethernet service-activation test
- Multiple interfaces for external data storage, display and remote access - HDMI, USB3.1 and RJ45
- Remote access and control via VNC client and SCPI
- User defined test profiles and thresholds enable fast, efficient and consistent turn-up of services
- Converged Ethernet/IP network testing and troubleshooting at 10 Mbps to 100 Gbps interfaces for data centers and core / metro networks
- Weight: 3.8 kg, Dimensions ( H × W × D ): 211×292×94 (mm)





© 2023 Deviser Instruments Incorporated

[www.deviserinstruments.com](http://www.deviserinstruments.com)



All rights reserved. Specifications subject to change without notice. All product and company names are trademarks of their respective corporations. Deviser Instruments manufacturing facilities are ISO 9001 certified. Do not reproduce, redistribute, or repost without written permission from Deviser Instruments.



[www.deviserinstruments.com](http://www.deviserinstruments.com)